



# TIRUMALA ENGINEERING COLLEGE

An ISO 9001:2015 Certified Institution, Accredited by NAAC & NBA

( Approved by AICTE, New Delhi & Affiliated to JNTU, Kakinada)

Jonnalagadda, Narasaraopet, Guntur Dist. - 522601 web : www.tmecnrt.org Email : tecnrt@gmail.com

## STUDENT'S FEEDBACK ANALYSIS ON CURRICULUM -2021-22

### STUDENT FEEDBACK

1. A special 4 point scale feedback from students on the curriculum is collected

2. We have received 446 Student sample cyps on syllabus of various programming(CSE,ECE,EEE,MECH

Department Name

Student samples

CSE		149			
question no	curriculum evaluation points	Response in%			
		Excellent	good	average	Poor
1	Depth of Syllabus Content is	129	19	1	0
2	Whether syllabus is Carrier oriented	119	25	5	0
3	Interest generated by teacher regarding syllabus is	127	16	6	0
4	The sequence of units in the syllabus	123	16	6	4
5	Rate the size of the syllabus in terms of load on the student	117	21	9	2
6	How do you rate the objectives stated and relevant to the course content	118	23	7	1
7	The internal evaluation system as it exists regarding syllabus is	126	18	3	2
8	What is your opinion about library holdings for the syllabus of your course	122	21	6	0
Average					

EEE		40			
question no	curriculum evaluation points	Response in%			
		Excellent	good	average	poor
1	Depth of Syllabus Content is	30	6	3	1
2	Whether syllabus is Carrier oriented	32	4	4	0
3	Interest generated by teacher regarding syllabus is	30	7	3	0
4	The sequence of units in the syllabus	27	9	2	2
5	Rate the size of the syllabus in terms of load on the student	26	8	5	1
6	How do you rate the objectives stated and relevant to the course content	30	7	2	1
7	The internal evaluation system as it exists regarding syllabus is	35	4	1	0
8	What is your opinion about library holdings for the syllabus of your course	28	10	2	0
Average					

MECH		45			
question no	curriculum evaluation points	Response in%			
		Excellent	good	average	poor
1	Depth of Syllabus Content is	36	4	4	1
2	Whether syllabus is Carrier oriented	40	5	0	0
3	Interest generated by teacher regarding syllabus is	39	4	1	1
4	The sequence of units in the syllabus	38	5	2	0
5	Rate the size of the syllabus in terms of load on the student	39	5	1	0
6	How do you rate the objectives stated and relevant to the course content	40	4	1	0
7	The internal evaluation system as it exists regarding syllabus is	36	4	5	0
8	What is your opinion about library holdings for the syllabus of your course	36	3	5	1
Average					

CIVIL		51			
questi on no	curriculum evaluation points	Response in%			
		Excellent	good	average	poor
1	Depth of Syllabus Content is	46	5	0	0
2	Whether syllabus is Carrier oriented	30	21	0	0
3	Interest generated by teacher regarding syllabus is	30	20	1	0
4	The sequence of units in the syllabus	35	15	1	0
5	Rate the size of the syllabus in terms of load on the student	32	18	0	1
6	How do you rate the objectives stated and relevant to the course content	45	5	1	0
7	The internal evaluation system as it exists regarding syllabus is	45	6	0	0
8	What is your opinion about library holdings for the syllabus of your course	30	10	10	1
Average					

ECE		161			
questi on no	curriculum evaluation points	Response in%			
		Excellent	good	average	poor
1	Depth of Syllabus Content is	108	50	3	0
2	Whether syllabus is Carrier oriented	89	64	8	0
3	Interest generated by teacher regarding syllabus is	98	58	5	0
4	The sequence of units in the syllabus	96	59	6	0
5	Rate the size of the syllabus in terms of load on the student	92	63	3	3
6	How do you rate the objectives stated and relevant to the course content	89	64	8	0
7	The internal evaluation system as it exists regarding syllabus is	86	69	5	1
8	What is your opinion about library holdings for the syllabus of your course	98	57	4	2
Average					

## STUDENT'S FEEDBACK ANALYSIS ON CURRICULUM -2021-22

### STUDENT FEEDBACK:

1. A special 4 point scale feedback from students on the curriculum is collected
2. We have received 446 Student sample copies on syllabus of various programming (CSE, ECE, EEE, MECH, CIVIL)

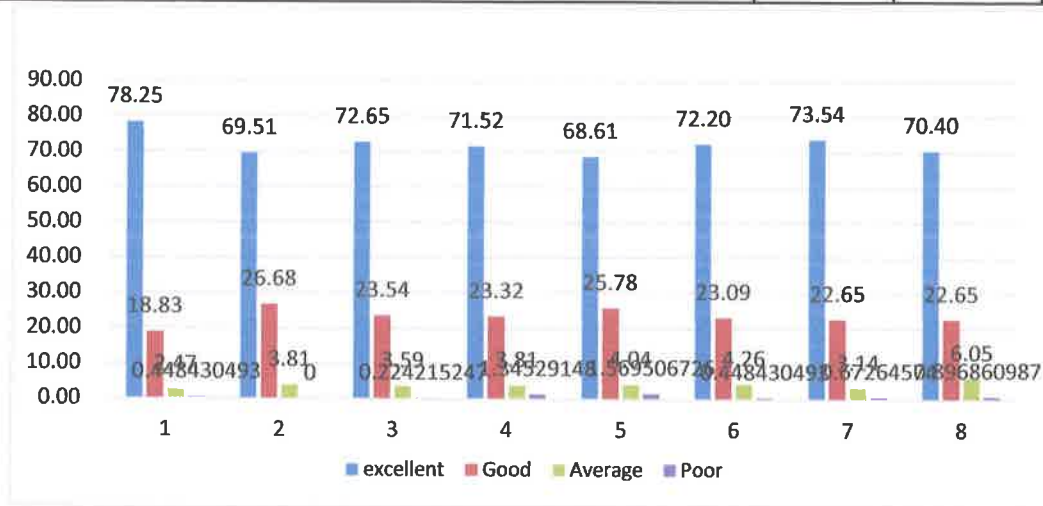
Total Response

446

questi on no	curriculum evaluation points	Response in%			
		Excellent	good	average	poor
1	Depth of Syllabus Content is	349	84	11	2
2	Whether syllabus is Carrier oriented	310	119	17	0
3	Interest generated by teacher regarding syllabus is	324	105	16	1
4	The sequence of units in the syllabus	319	104	17	6
5	Rate the size of the syllabus in terms of load on the student	306	115	18	7
6	How do you rate the objectives stated and relevant to the course content	322	103	19	2
7	The internal evaluation system as it exists regarding syllabus is	328	101	14	3
8	What is your opinion about library holdings for the syllabus of your course	314	101	27	4
Average					

Total Response in %

question no	curriculum evaluation points	Response in%			
		Excellent	good	average	poor
1	Depth of Syllabus Content is	78.25	18.83	2.47	0.448
2	Whether syllabus is Career oriented	69.51	26.68	3.81	0
3	Interest generated by teacher regarding syllabus is	72.65	23.54	3.59	0.224
4	The sequence of units in the syllabus	71.52	23.32	3.81	1.345
5	Rate the size of the syllabus in terms of load on the student	68.61	25.78	4.04	1.57
6	How do you rate the objectives stated and relevant to the course content	72.20	23.09	4.26	0.448
7	The internal evaluation system as it exists regarding syllabus is	73.54	22.65	3.14	0.673
8	What is your opinion about library holdings for the syllabus of your course	70.40	22.65	6.05	0.897
	Average				



STUDENT'S FEEDBACK ANALYSIS ON CURRICULUM -2021-22

*[Signature]*  
INCHARGE

*[Signature]*  
IQAC INCHARGE

*[Signature]*  
Dr. Y.V. Narayana  
PRINCIPAL  
TIRUMALA ENGINEERING COLLEGE  
JONNALAGADDA (M), NARASARAOPET

Co-ORDINATOR, IQAC  
TIRUMALA ENGINEERING COLLEGE  
JONNALAGADDA, Narasaraopet,  
Guntur(Dt.), Andhra Pradesh-522 601.



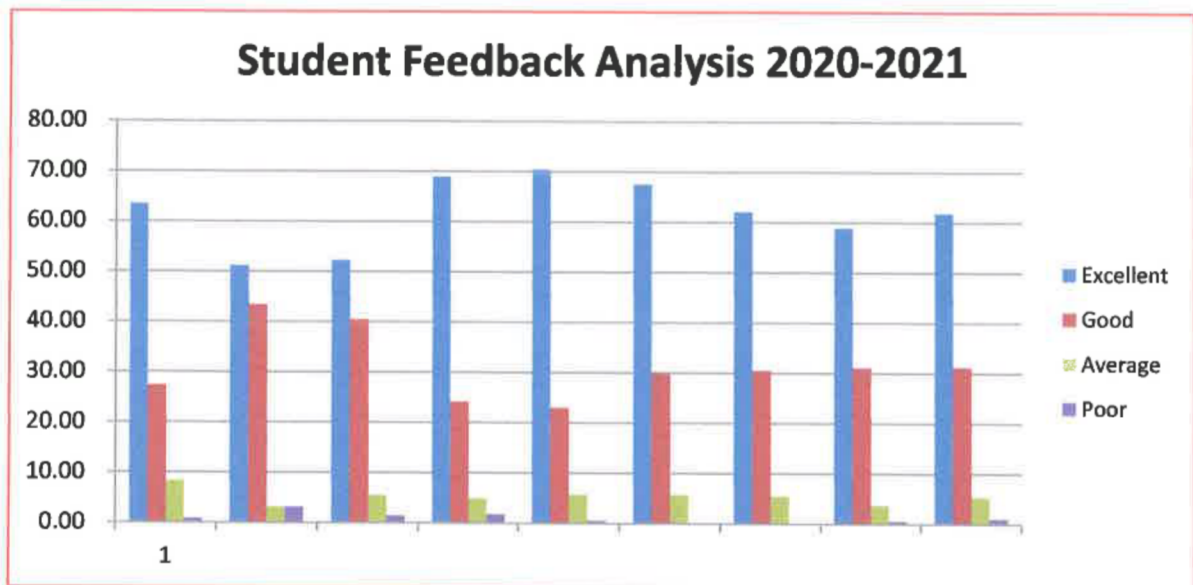
# TIRUMALA ENGINEERING COLLEGE


An ISO 9001:2015 Certified Institution, Accredited by NAAC & NBA

( Approved by AICTE, New Delhi & Affiliated to JNTU, Kakinada)

Jonnalagadda, Narasaraopet, Guntur Dist. - 522601 web : www.tmecnr.org Email : tecnr@gmail.com

Q.No	curriculum evaluation points	Response in%			
		Excellent	good	average	Poor
1	Depth of Syllabus Content is	63.51	27.30	8.33	0.86
2	Whether syllabus is Carrier oriented	51.15	43.39	3.16	3.16
3	Interest generated by teacher regarding syllabus is	52.30	40.52	5.46	1.44
4	The sequence of units in the syllabus	68.97	24.14	4.89	1.72
5	Rate the size of the syllabus in terms of load on the student	70.40	22.99	5.75	0.57
6	How do you rate the objectives stated and relevant to the course content	67.53	29.89	5.75	0.00
7	The internal evaluation system as it exists regarding syllabus is	62.07	30.46	5.46	0.00
8	What is your opinion about library holdings for the syllabus of your course	58.91	31.03	3.74	0.57
	Average	61.85	31.21	5.32	1.04



  
 Co-ORDINATOR, IQAC  
 TIRUMALA ENGINEERING COLLEGE  
 JONNALAGADDA, Narasaraopet,  
 Guntur(DI), Andhra Pradesh-522 601.

  
 PRINCIPAL  
 TIRUMALA ENGINEERING COLLEGE  
 JONNALAGADDA (V), NARASARAOPET

Q.No	curriculum evaluation points	Response in%			
		Excellent	good	average	Poor
1	Depth of Syllabus Content is	71	42	12	0.86
2	Whether syllabus is Carrier oriented	63	62	3	3.16
3	Interest generated by teacher regarding syllabus is	68	48	8	1.44
4	The sequence of units in the syllabus	80	40	4	1.72
5	Rate the size of the syllabus in terms of load on the student	84	36	4	0.57
6	How do you rate the objectives stated and relevant to the course content	88	42	2	0.00
7	The internal evaluation system as it exists regarding syllabus is	73	44	1	0.00
8	What is your opinion about library holdings for the syllabus of your course	70	30	4	0.57
	Average	74.63	43.00	4.75	1.04

Q.No	curriculum evaluation points	Response in%			
		Excellent	good	average	Poor
1	Depth of Syllabus Content is	35	22	5	0.86
2	Whether syllabus is Carrier oriented	30	31	1	3.16
3	Interest generated by teacher regarding syllabus is	34	24	4	1.44
4	The sequence of units in the syllabus	40	20	2	1.72
5	Rate the size of the syllabus in terms of load on the student	42	18	2	0.57
6	How do you rate the objectives stated and relevant to the course content	44	21	1	0.00
7	The internal evaluation system as it exists regarding syllabus is	38	23	1	0.00
8	What is your opinion about library holdings for the syllabus of your course	45	15	2	0.57
	Average	38.50	21.75	2.25	1.04

Q.No	curriculum evaluation points	Response in%			
		Excellent	good	average	Poor
1	Depth of Syllabus Content is	45	5	9	0.86
2	Whether syllabus is Carrier oriented	50	7	1	3.16
3	Interest generated by teacher regarding syllabus is	50	8	1	1.44
4	The sequence of units in the syllabus	48	9	1	1.72
5	Rate the size of the syllabus in terms of load on the student	48	9	2	0.57
6	How do you rate the objectives stated and relevant to the course content	48	10	1	0.00
7	The internal evaluation system as it exists regarding syllabus is	47	11	1	0.00
8	What is your opinion about library holdings for the syllabus of your course	48	8	2	0.57
	Average	48.00	8.38	2.25	1.04

## CIVIL

55

Q.No	curriculum evaluation points	Response in%			
		Excellent	good	average	Poor
1	Depth of Syllabus Content is	40	10	2	0.86
2	Whether syllabus is Carrier oriented	10	30	5	3.16
3	Interest generated by teacher regarding syllabus is	5	40	5	1.44
4	The sequence of units in the syllabus	45	2	3	1.72
5	Rate the size of the syllabus in terms of load on the student	45	5	3	0.57
6	How do you rate the objectives stated and relevant to the course content	30	20	5	0.00
7	The internal evaluation system as it exists regarding syllabus is	35	10	10	0.00
8	What is your opinion about library holdings for the syllabus of your course	15	40		0.57
	Average	28.13	19.63	4.13	1.04

## ECE

47

Q.No	curriculum evaluation points	Response in%			
		Excellent	good	average	Poor
1	Depth of Syllabus Content is	30	16	1	0.86
2	Whether syllabus is Carrier oriented	25	21	1	3.16
3	Interest generated by teacher regarding syllabus is	25	21	1	1.44
4	The sequence of units in the syllabus	27	13	7	1.72
5	Rate the size of the syllabus in terms of load on the student	26	12	9	0.57
6	How do you rate the objectives stated and relevant to the course content	25	11	11	0.00
7	The internal evaluation system as it exists regarding syllabus is	23	18	6	0.00
8	What is your opinion about library holdings for the syllabus of your course	27	15	5	0.57
	Average	26.00	15.88	5.13	1.04

348

Q.No	curriculum evaluation points	Response in%			
		Excellent	good	average	Poor
1	Depth of Syllabus Content is	221	95	29	0.86
2	Whether syllabus is Carrier oriented	178	151	11	3.16
3	Interest generated by teacher regarding syllabus is	182	141	19	1.44
4	The sequence of units in the syllabus	240	84	17	1.72
5	Rate the size of the syllabus in terms of load on the student	245	80	20	0.57
6	How do you rate the objectives stated and relevant to the course content	235	104	20	0.00
7	The internal evaluation system as it exists regarding syllabus is	216	106	19	0.00
8	What is your opinion about library holdings for the syllabus of your course	205	108	13	0.57
	Average	215.25	108.63	18.50	1.04

Co-ORDINATOR, IQAC  
TIRUMALA ENGINEERING COLLEGE  
JONNALAGADDA, Narasaraopet,  
Guntur(DI), Andhra Pradesh-522 601.

Dr. Y. V. Narayana  
Principal, TEC

PRINCIPAL  
TIRUMALA ENGINEERING COLLEGE  
JONNALAGADDA (V), NARASARAOPET

**STUDENT FEEDBACK ANALYSIS REPORT  
ON CURRICULUM  
2019-20**



## STUDENT'S FEEDBACK ANALYSIS ON CURRICULUM -2019-20

### STUDENT FEEDBACK:

1. A special 4 point scale feedback from students on the curriculum is collected
2. we have received 227 Student sample copys on syllabus of various programmimg(CSE,ECE,EEE,MECH,CIVIL)

Depatment Name

Student samples

CSE

60

questi on no	curriculum evaluation points	Response in%			
		Excellen	good	average	Poor
1	Depth of Syllabus Conent is	46	9	5	0
2	Wheather syllbus is Carrier oriented	52	7	1	0
3	Interest generated by teacher regarding syllabus is	43	11	4	2
4	The sequence of units in the syllabus	39	12	8	1
5	Rate the size of the syllabus interms of load on the student	48	11	0	1
6	How do you rate the objectives stated and relevant to the course content	55	3	2	0
7	The internal evalutuion system as it exists regarding syllabus is	51	7	1	1
8	What is your openion about library holdings for the syllabus of your course	49	10	1	0
	Average				

EEE

36

questi on no	curriculum evaluation points	Response in%			
		Excellen	good	average	poor
1	Depth of Syllabus Conent is	25	9	2	0
2	Wheather syllbus is Carrier oriented	30	6	0	0
3	Interest generated by teacher regarding syllabus is	23	10	3	0
4	The sequence of units in the syllabus	26	9	1	0
5	Rate the size of the syllabus interms of load on the student	24	10	2	0
6	How do you rate the objectives stated and relevant to the course content	29	4	3	0
7	The internal evalutuion system as it exists regarding syllabus is	25	10	1	0
8	What is your openion about library holdings for the syllabus of your course	30	4	2	0
	Average				



question no	curriculum evaluation points	Response in%			
		Excellent	good	average	poor
1	Depth of Syllabus Content is	25	3	2	0
2	Whether syllabus is Career oriented	24	2	4	0
3	Interest generated by teacher regarding syllabus is	23	3	4	0
4	The sequence of units in the syllabus	25	2	3	0
5	Rate the size of the syllabus in terms of load on the student	26	2	1	1
6	How do you rate the objectives stated and relevant to the course content	27	2	1	0
7	The internal evaluation system as it exists regarding syllabus is	27	1	2	0
8	What is your opinion about library holdings for the syllabus of your course	30	0	0	0
	Average				

CIVIL

58

question no	curriculum evaluation points	Response in%			
		Excellent	good	average	poor
1	Depth of Syllabus Content is	46	12	0	0
2	Whether syllabus is Career oriented	30	28	0	0
3	Interest generated by teacher regarding syllabus is	18	30	4	6
4	The sequence of units in the syllabus	22	26	5	5
5	Rate the size of the syllabus in terms of load on the student	32	18	4	4
6	How do you rate the objectives stated and relevant to the course content	12	36	6	4
7	The internal evaluation system as it exists regarding syllabus is	42	6	10	0
8	What is your opinion about library holdings for the syllabus of your course	20	26	10	2
	Average				

ECE

53

question no	curriculum evaluation points	Response in%			
		Excellent	good	average	poor
1	Depth of Syllabus Content is	35	18	0	0
2	Whether syllabus is Career oriented	29	24	0	0
3	Interest generated by teacher regarding syllabus is	26	26	1	0
4	The sequence of units in the syllabus	15	36	0	1
5	Rate the size of the syllabus in terms of load on the student	15	36	2	0
6	How do you rate the objectives stated and relevant to the course content	32	20	1	0
7	The internal evaluation system as it exists regarding syllabus is	24	29	0	0
8	What is your opinion about library holdings for the syllabus of your course	28	25	1	0
	Average				

# STUDENT'S FEEDBACK ANALYSIS ON CURRICULUM -2019-20

## STUDENT FEEDBACK:

1.A special 4 point scale feedback from students on the curriculum is collected

2. we have received 227 Student sample copys on syllabus of various programming(CSE,ECE,EEE,MECH,CIVIL)

Total Response

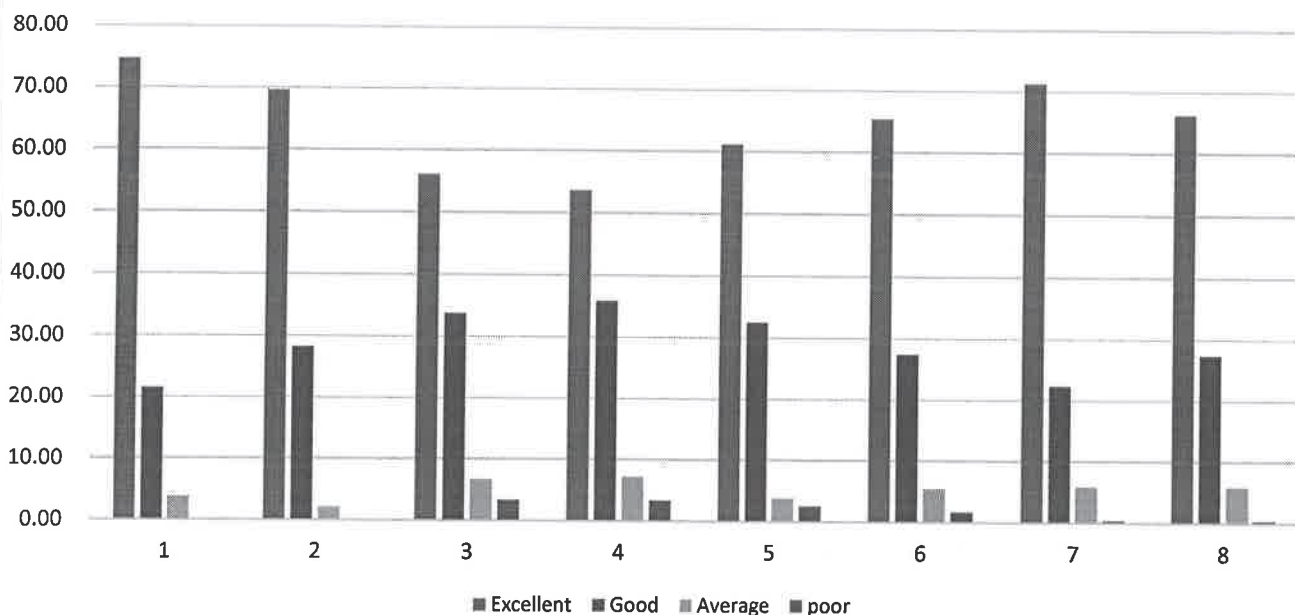
237

questi on no	curriculum evaluation points	Response in%			
		Excellen	good	average	poor
1	Depth of Syllabus Conent is	177	51	9	0
2	Wheather syllbus is Carrier oriented	165	67	5	0
3	Interest generated by teacher regarding syllabus is	133	80	16	8
4	The sequence of units in the syllabus	127	85	17	8
5	Rate the size of the syllabus interms of load on the student	145	77	9	6
6	How do you rate the objectives stated and relevant to the course content	155	65	13	4
7	The internal evaluuion system as it exists regarding syllabus is	169	53	14	1
8	What is your openion about library holdings for the syllabus of your course	157	65	14	1
	Average				

Total Response in %

questi on no	curriculum evaluation points	Response in%			
		Excellen	good	average	poor
1	Depth of Syllabus Conent is	74.68	21.52	3.80	0
2	Wheather syllbus is Carrier oriented	69.62	28.27	2.11	0
3	Interest generated by teacher regarding syllabus is	56.12	33.76	6.75	3.3755
4	The sequence of units in the syllabus	53.59	35.86	7.17	3.3755
5	Rate the size of the syllabus interms of load on the student	61.18	32.49	3.80	2.5316
6	How do you rate the objectives stated and relevant to the course content	65.40	27.43	5.49	1.6878
7	The internal evaluuion system as it exists regarding syllabus is	71.31	22.36	5.91	0.4219
8	What is your openion about library holdings for the syllabus of your course	66.24	27.43	5.91	0.4219
	Average				

Student Feedback-2019-20



Dr. Y.V. Narayana  
Principal  
TIRUMALA ENGINEERING COLLEGE  
JONNALAGADDA (V), NARASARAOPET

**STUDENT FEEDBACK ANALYSIS REPORT  
ON CURRICULUM  
2018-19**



## STUDENT'S FEEDBACK ANALYSIS ON CURRICULUM -2018-19

### STUDENT FEEDBACK:

1. A special 4 point scale feedback from students on the curriculum is collected

2. we have received 175 Student sample copys on syllabus of various programming(CSE,ECE,EEE,MECH,CIVIL)

Department Name

Student samples

CSE

65

question no	curriculum evaluation points	Response in%			
		Excellent	good	average	poor
1	Depth of Syllabus Content is	51	8	6	0
2	Whether syllabus is Carrier oriented	48	8	5	4
3	Interest generated by teacher regarding syllabus is	45	15	3	2
4	The sequence of units in the syllabus	39	18	5	3
5	Rate the size of the syllabus in terms of load on the student	53	9	3	0
6	How do you rate the objectives stated and relevant to the course content	49	10	5	1
7	The internal evaluation system as it exists regarding syllabus is	47	11	4	3
8	What is your opinion about library holdings for the syllabus of your course	44	15	6	0
	Average				

EEE

47

question no	curriculum evaluation points	Response in%			
		Excellent	good	average	poor
1	Depth of Syllabus Content is	26	15	6	0
2	Whether syllabus is Carrier oriented	30	17	0	0
3	Interest generated by teacher regarding syllabus is	31	11	5	0
4	The sequence of units in the syllabus	23	20	4	0
5	Rate the size of the syllabus in terms of load on the student	30	15	2	0
6	How do you rate the objectives stated and relevant to the course content	23	20	4	0
7	The internal evaluation system as it exists regarding syllabus is	29	16	2	0
8	What is your opinion about library holdings for the syllabus of your course	32	7	8	0
	Average				

MECH

30

question no	curriculum evaluation points	Response in%			
		Excellent	good	average	poor
1	Depth of Syllabus Content is	30	0	0	0
2	Whether syllabus is Carrier oriented	28	1	1	0
3	Interest generated by teacher regarding syllabus is	23	4	2	1
4	The sequence of units in the syllabus	22	5	2	1
5	Rate the size of the syllabus in terms of load on the student	28	1	1	0
6	How do you rate the objectives stated and relevant to the course content	27	2	1	0
7	The internal evaluation system as it exists regarding syllabus is	30	0	0	0
8	What is your opinion about library holdings for the syllabus of your course	25	3	2	0
	Average				

questi on no	curriculum evaluation points	Response in%			
		excellen	good	average	poor
1	Depth of Syllabus Content is	36	10	0	2
2	Whether syllabus is Carrier oriented	42	4	2	0
3	Interest generated by teacher regarding syllabus is	5	31	10	2
4	The sequence of units in the syllabus	12	30	2	4
5	Rate the size of the syllabus in terms of load on the student	28	15	5	0
6	How do you rate the objectives stated and relevant to the course content	32	6	10	0
7	The internal evaluation system as it exists regarding syllabus is	22	20	4	2
8	What is your opinion about library holdings for the syllabus of your course	10	32	6	0
	Average				

questi on no	curriculum evaluation points	Response in%			
		excellen	good	average	poor
1	Depth of Syllabus Content is	23	27	0	0
2	Whether syllabus is Carrier oriented	20	30	0	0
3	Interest generated by teacher regarding syllabus is	21	29	0	0
4	The sequence of units in the syllabus	22	27	1	0
5	Rate the size of the syllabus in terms of load on the student	23	19	8	0
6	How do you rate the objectives stated and relevant to the course content	22	9	19	0
7	The internal evaluation system as it exists regarding syllabus is	23	11	16	0
8	What is your opinion about library holdings for the syllabus of your course	23	23	4	0
	Average				

# STUDENT'S FEEDBACK ANALYSIS ON CURRICULUM -2018-19

## STUDENT FEEDBACK:

1. A special 4 point scale feedback from students on the curriculum is collected

2. we have received 175 Student sample copys on syllabus of various programmimg(CSE,ECE,EEE,MECH,CIVIL)

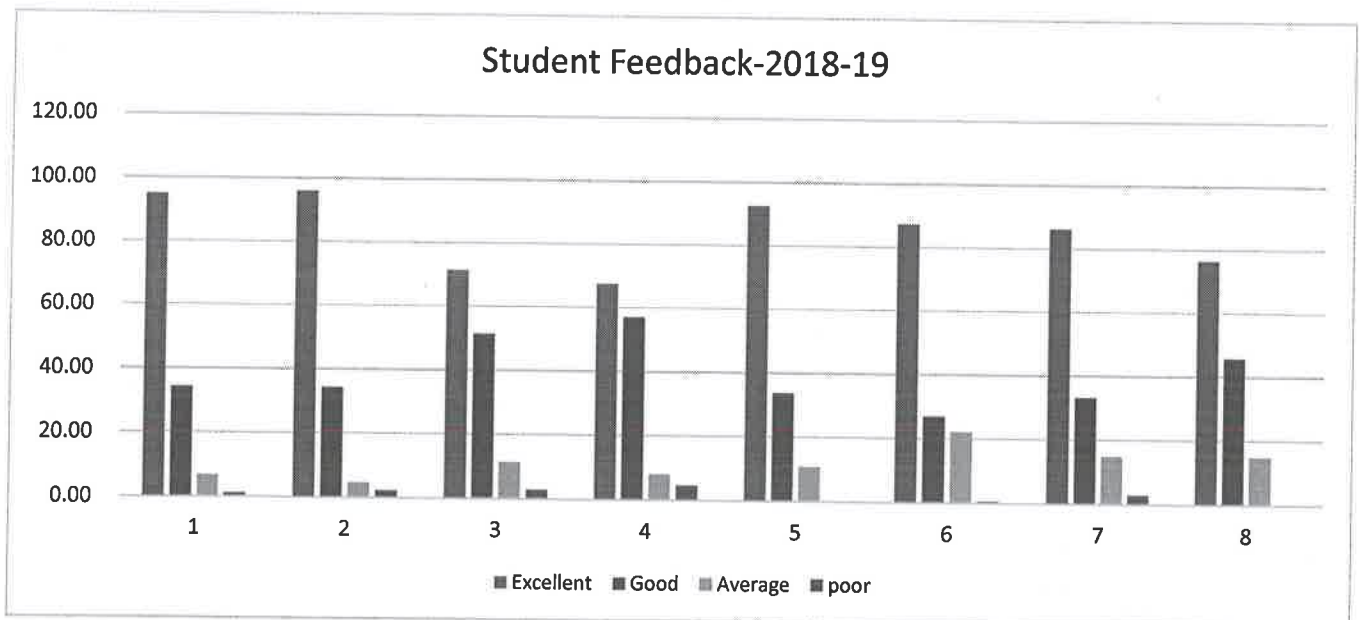
TOTAL SAMPLES

175

questi on no	curriculum evaluation points	Response in%			
		Excellen	good	average	poor
1	Depth of Syllabus Conent is	166	60	12	2
2	Wheather syllbus is Carrier oriented	168	60	8	4
3	Interest generated by teacher regarding syllabus is	125	90	20	5
4	The sequence of units in the syllabus	118	100	14	8
5	Rate the size of the syllabus interms of load on the student	162	59	19	0
6	How do you rate the objectives stated and relevant to the course content	153	47	39	1
7	The internal evalutuion system as it exists regarding syllabus is	151	58	26	5
8	What is your openion about library holdings for the syllabus of your course	134	80	26	0
	Average				

TOATL SAMPLES IN %

questi on no	curriculum evaluation points	Response in%			
		Excellen	good	average	poor
1	Depth of Syllabus Conent is	94.86	34.29	6.86	1.143
2	Wheather syllbus is Carrier oriented	96.00	34.29	4.57	2.286
3	Interest generated by teacher regarding syllabus is	71.43	51.43	11.43	2.857
4	The sequence of units in the syllabus	67.43	57.14	8.00	4.571
5	Rate the size of the syllabus interms of load on the student	92.57	33.71	10.86	0
6	How do you rate the objectives stated and relevant to the course content	87.43	26.86	22.29	0.571
7	The internal evalutuion system as it exists regarding syllabus is	86.29	33.14	14.86	2.857
8	What is your openion about library holdings for the syllabus of your course	76.57	45.71	14.86	0
	Average				



Dr. V. Narayana

PRINCIPAL, TEC

TIRUMALA ENGINEERING COLLEGE

**STUDENT FEEDBACK ANALYSIS REPORT  
ON CURRICULUM  
2017-18**



# TIRUMALA ENGINEERING COLLEGE

An ISO 9001:2015 Certified Institution, Accredited by NAAC & NBA

( Approved by AICTE, New Delhi & Affiliated to JNTU, Kakinada)

Jonnalagadda, Narasaraopet, Guntur Dist. - 522601 web : www.tmecnrt.org Email : tecnrt@gmail.com

## STUDENT'S FEEDBACK ANALYSIS ON CURRICULUM -2017-18

### STUDENT FEEDBACK:

1. A special 4 point scale feedback from students on the curriculum is collected
2. we have received 224 Student sample copys on syllabus of various programming(CSE,ECE,EEE,MECH,CIVIL)

Department Name  
CSE

Student Samples  
60

question no	curriculum evaluation points	Response			
		Excellent	good	average	poor
1	Depth of Syllabus Content is	49	10	1	0
2	Whether syllabus is Carrier oriented	51	7	1	1
3	Interest generated by teacher regarding syllabus is	55	3	2	0
4	The sequence of units in the syllabus	48	11	0	1
5	Rate the size of the syllabus in terms of load on the student	39	12	8	1
6	How do you rate the objectives stated and relevant to the course	43	11	4	2
7	The internal evaluation system as it exists regarding syllabus is	52	7	1	0
8	What is your opinion about library holdings for the syllabus of your	46	9	5	0
Average					

EEE

30

question no	curriculum evaluation points	Response			
		Excellent	good	average	poor
1	Depth of Syllabus Content is	20	10	0	0
2	Whether syllabus is Carrier oriented	12	16	2	0
3	Interest generated by teacher regarding syllabus is	13	9	8	0
4	The sequence of units in the syllabus	13	13	4	0
5	Rate the size of the syllabus in terms of load on the student	11	14	5	0
6	How do you rate the objectives stated and relevant to the course	11	13	6	0
7	The internal evaluation system as it exists regarding syllabus is	14	10	6	0
8	What is your opinion about library holdings for the syllabus of your	12	10	8	0
Average					

  
 PRINCIPAL  
 TIRUMALA ENGINEERING COLLEGE  
 JONNALAGADDA (V), NARASARAOPET



question no	curriculum evaluation points	Response			
		Excellent	good	average	poor
1	Depth of Syllabus Content is	26	2	2	0
2	Whether syllabus is Carrier oriented	24	2	3	1
3	Interest generated by teacher regarding syllabus is	27	2	1	0
4	The sequence of units in the syllabus	27	2	1	0
5	Rate the size of the syllabus in terms of load on the student	26	2	2	0
6	How do you rate the objectives stated and relevant to the course	28	1	1	0
7	The internal evaluation system as it exists regarding syllabus	27	2	1	0
8	What is your opinion about library holdings for the syllabus course	25	2	3	0
	Average				

CIVIL

54

question no	curriculum evaluation points	Response			
		Excellent	good	average	poor
1	Depth of Syllabus Content is	42	12	0	0
2	Whether syllabus is Carrier oriented	40	10	0	4
3	Interest generated by teacher regarding syllabus is	12	38	4	0
4	The sequence of units in the syllabus	32	18	2	2
5	Rate the size of the syllabus in terms of load on the student	24	26	4	0
6	How do you rate the objectives stated and relevant to the course	14	26	10	4
7	The internal evaluation system as it exists regarding syllabus	28	18	4	4
8	What is your opinion about library holdings for the syllabus course	34	12	4	2
	Average				

ECE

50

question no	curriculum evaluation points	Response			
		Excellent	good	average	poor
1	Depth of Syllabus Content is	44	6	0	0
2	Whether syllabus is Carrier oriented	40	10	1	0
3	Interest generated by teacher regarding syllabus is	42	8	0	0
4	The sequence of units in the syllabus	29	20	1	0
5	Rate the size of the syllabus in terms of load on the student	20	30		0
6	How do you rate the objectives stated and relevant to the course	25	22	3	0
7	The internal evaluation system as it exists regarding syllabus	28	21	1	0
8	What is your opinion about library holdings for the syllabus course	30	13	7	0
	Average				

# STUDENT FEEDBACK ANALYSIS ON CURRICULUM -2017-18

## STUDENT FEEDBACK:

- 1.A special 4 point scale feedback from students on the curriculum is collected
2. we have received 224 Student sample copys on syllabus of various programmig(CSE,ECE,EEE,MECH,CIVIL)

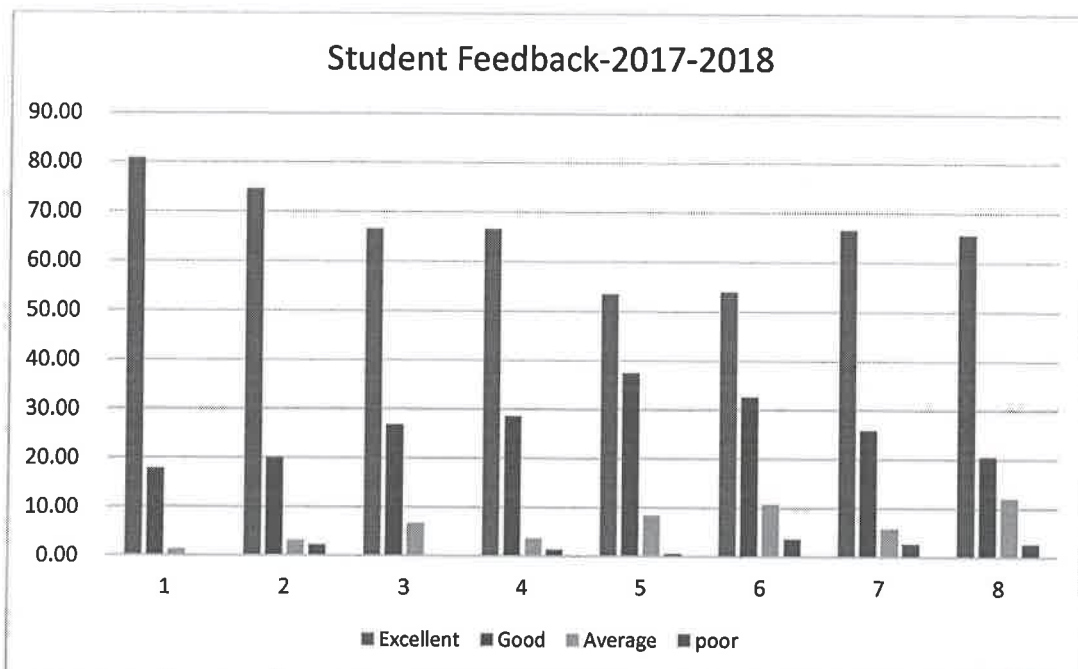
Total students samples

224

questi on no	curriculum evaluation points	Response			
		Excellent	good	average	poor
1	Depth of Syllabus Conent is	181	40	3	0
2	Wheather syllbus is Carrier oriented	167	45	7	5
3	Interest generated by teacher regarding syllabus is	149	60	15	0
4	The sequence of units in the syllabus	149	64	8	3
5	Rate the size of the syllabus interms of load on the student	120	84	19	1
6	How do you rate the objectives stated and relevant to the cc	121	73	24	6
7	The internal evaluuion system as it exists regarding syllabus	149	58	13	4
8	What is your openion about library holdings for the syllabus d	147	46	27	4
	Average	0			

Total students samples Response in %

questi on no	curriculum evaluation points	Response			
		Excellent	good	average	poor
1	Depth of Syllabus Conent is	80.80	17.86	1.34	0
2	Wheather syllbus is Carrier oriented	74.55	20.09	3.13	2.2321
3	Interest generated by teacher regarding syllabus is	66.52	26.79	6.70	0
4	The sequence of units in the syllabus	66.52	28.57	3.57	1.3393
5	Rate the size of the syllabus interms of load on the student	53.57	37.50	8.48	0.5525
6	How do you rate the objectives stated and relevant to the cc	54.02	32.59	10.71	3.5928
7	The internal evaluuion system as it exists regarding syllabus	66.52	25.89	5.80	2.6846
8	What is your openion about library holdings for the syllabus d	65.63	20.54	12.05	2.6846
	Average				



Dr. Y.V. Narayana

Principal, TEC